

### Mile-by-Mile Anchorages

Each anchorage is listed, north-to-south, by ICW statute mile (STM), with mile markers overlaid on the CHART SCREENSHOT. Distance off the main channel or ICW Magenta Line is noted in the ANCHORAGE OVERVIEW. Popular alternate names are often mentioned in the ANCHORAGE SUMMARY.

### GPS Waypoints

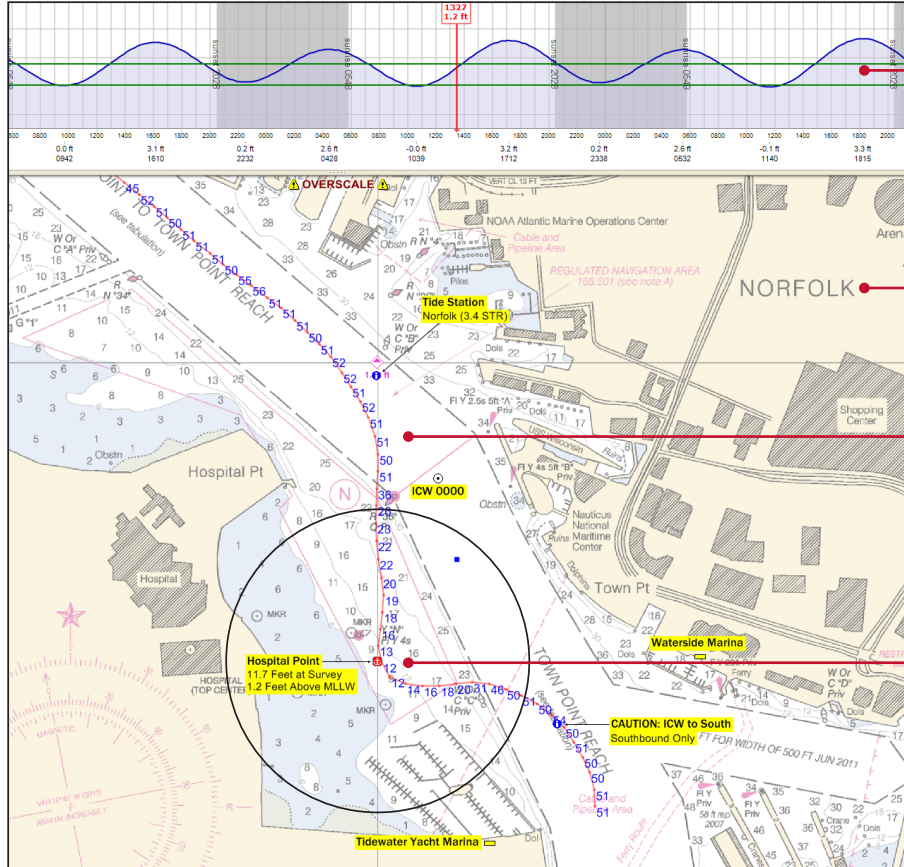
Locate each surveyed anchorage by latitude and longitude. Occasionally, additional locations are suggested and reviewed in the ANCHORAGE SUMMARY.

### Wind Protection Roses

Quickly compare nearby options to select the best protection—or cooling breeze and mosquito deterrent—for that night's predicted wind direction and strength. Primary protection is iconically depicted while details, such as buildings, trees or low saltmarsh, are provided in the ANCHORAGE SUMMARY.

## HOSPITAL POINT STM 0.2

36°50.635'N  
076°17.999'W



NOAA and USACE chart screenshots, depth-annotated tracks and soundings, and anchorages overviews and summaries are NOT TO BE USED FOR NAVIGATION.

### Tidal Graphs

Visualize the survey range-of-tide at the most relevant tide station. Compare the survey tide level with your tide level, adding or subtracting to quickly calculate for current conditions. Use the ANCHORAGE OVERVIEW spring tidal range (STR) to compute anchoring scope and as a proxy for current. Closer, but less-relevant tide stations, are called out in the NOTES AND CAUTIONS.

### Chart Screenshots

Actual laptop screenshots, running Coastal Explorer™ navigation software, are like looking over the authors' shoulders. Color reproductions of official NOAA charts—the latest editions at survey—are annotated with nearby marinas, boat ramps, dinghy docks, navigation alerts, and more!

### Depth-Annotated Approach Tracks

Multiple visits, recorded by the authors' calibrated depth-sounder linked to their computer, were logged as digital breadcrumb trails. Use these selected real-world tracks (adjusted by your current height-of-tide) to interpret approach, entrance, exit, and surrounding area depth conditions.

### Surveyed Anchorages

An anchor icon marks the exact location of the waypointed anchorage and is annotated with the depth recorded at survey, at the tide level pictured in the TIDAL GRAPH. The ANCHORAGE SUMMARY describes the area and conditions, centered on this waypoint.

### Anchorage Summaries

Preview each anchorage, including descriptions of the surrounding shore, noise and scenery, suggested approaches, alternative locations, special considerations, shore access, and nearby services.

### Notes and Cautions

Important considerations such as safety and navigation alerts, channel traffic and wake, charted obstructions, and nearby but less-relevant tide stations are highlighted.

### States and Regions

Quickly flip through the guide to locate anchoring options by state, page, region, or route.

### OVERVIEW

**Off ICW:** 200 Yards  
**Depth:** 11.7 Feet at Survey (+1.2' MLLW)  
**Tide Station:** Norfolk (3.4' STR)  
**Protection:** Protected S to W  
**Current:** Moderate  
**Scenic:** Moderately Scenic  
**Roominess:** Many Boats  
**Shore Access:** Dinghy Dock



On the Water AnchorGuide ICW 2012

### ANCHORAGE SUMMARY

Probably the most famous ICW anchorage, located at R36 Mile Zero, the official start of the southbound journey. Scenic at night with a view of the Norfolk skyline. A must-donce anchorage, although largely exposed and lumpy with passing boat wakes.

Exit ICW southeast of R36. Proceed westerly to anchor among the fleet. Room for many boats.

Shore access on the Norfolk side at Town Point Park (near Nauticus) or Waterside Marina (nominal fee). Norfolk has a downtown retail mall. Dinghy ashore on the Portsmouth side at North Harbor Landing or High Street Landing (preferred). Portsmouth boasts a historic district with shops, restaurants, and supermarket courtesy rides via cruiser-friendly Mile Marker 0 Marine Supply ([www.milemarker0marinesupplies.com](http://www.milemarker0marinesupplies.com)).

**NOTE:** A passenger ferry runs between the two Portsmouth Landings and Waterside in Norfolk.

VA-6

Virginia Cut (Route 1)

### Pet-Landing and Grocery Store Icons

Map out Fido's pit stops, ranging from rough-shore relief to dog-friendly parks. Schedule grocery shopping, with dinghy access, where a supermarket is within a one-mile walk or courtesy rides are provided. Details are supplied in the ANCHORAGE SUMMARY.

### Anchorage Overviews

Choose an anchorage for what matters most to you: proximity to the ICW, depth, wind protection, current, scenery, roominess, or shore access. Off ICW is the distance from the Magenta Line in yards or miles. Depth is at the waypointed anchorage at the particular height-of-tide, above or below MLLW. Tide Station calls out the most relevant station (corresponding to the TIDAL GRAPH) with its spring tidal range in feet, noted in parentheses. Roominess is based on a "theory" boat—40' LOA, 13'6" beam, and 5' draft.

### Captains Mark & Diana Doyle

These cruising guide authors are out "on the water" full time using high-tech tools to better illustrate their survey work. Techniques such as geo-tagging digital photos and marrying depth soundings with anchorage approach tracks allow them to produce more visually rich and informative On the Water CruiseGuides, AnchorGuides, and ChartGuides.



\$29.95